

**J8, J9 HOLES ONLY**

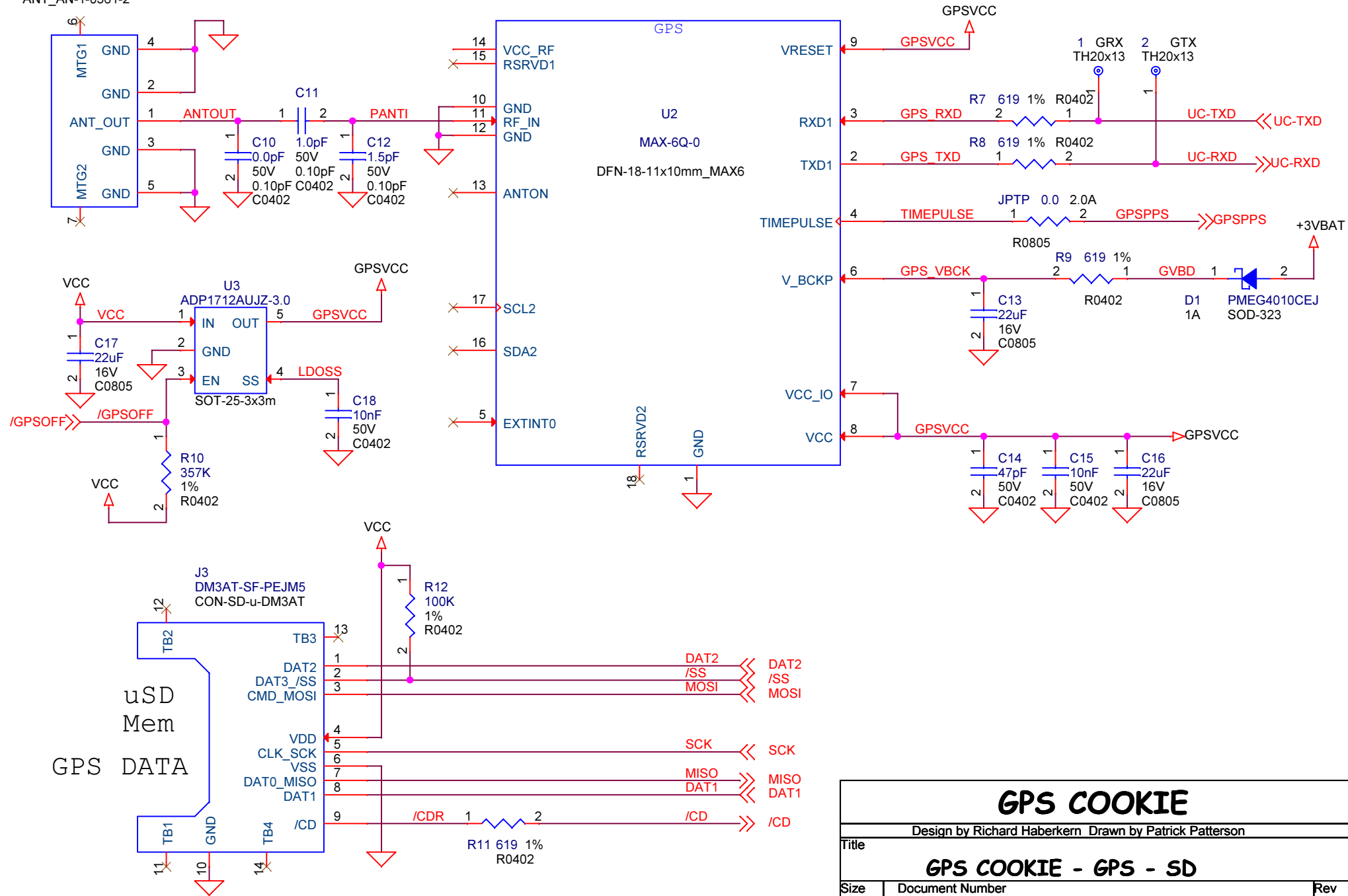
DNI

**OPTIONAL RX, TX**

PROGRAM & DEBUGWIRE

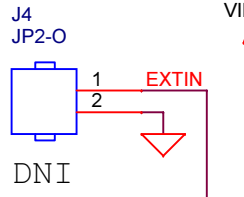
<h1>GPS COOKIE</h1>		
Design by Richard Haberkern Drawn by Patrick Patterson		
<b>GPS-COOKIE-ARDUINO</b>		
Size	Document Number	Rev
<b>A</b>	<b>GC-S01</b>	<b>B</b>
Date:	Tuesday, April 01, 2014	Sheet 1 of 4

GPS Passive Antenna  
 ANT1  
 AN-1-0361-2\_A10137  
 ANT\_AN-1-0361-2

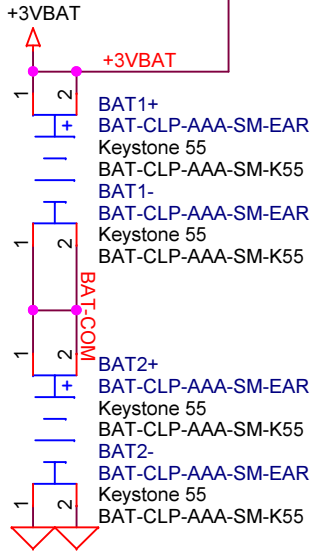
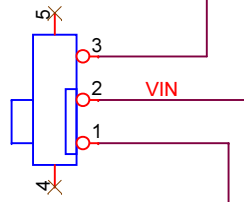


<h1>GPS COOKIE</h1>		
Design by Richard Haberkern Drawn by Patrick Patterson		
<b>GPS COOKIE - GPS - SD</b>		
Size	Document Number	Rev
<b>A</b>	<b>GC-S01</b>	<b>B</b>
Date:	Tuesday, April 01, 2014	Sheet 2 of 4

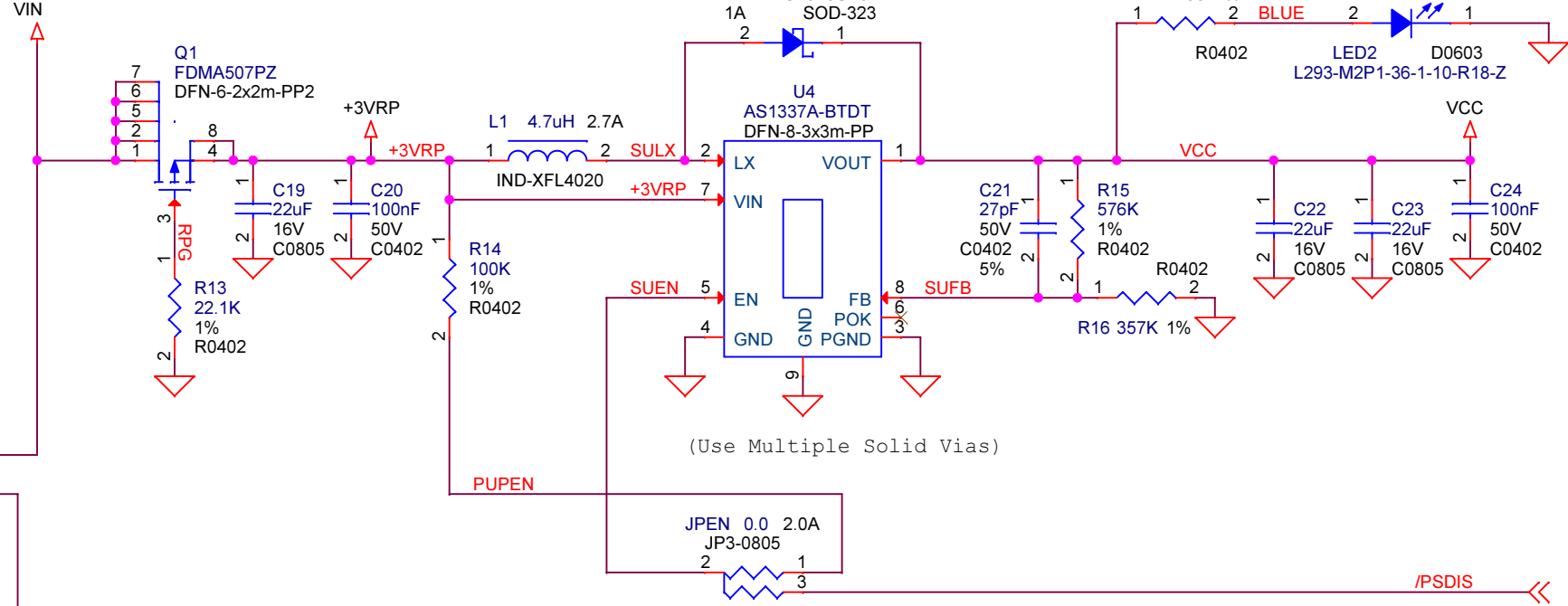
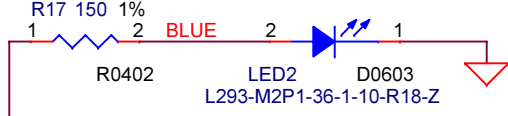
EXT. PWR IN



ON/OFF  
OFF (EXT IN)

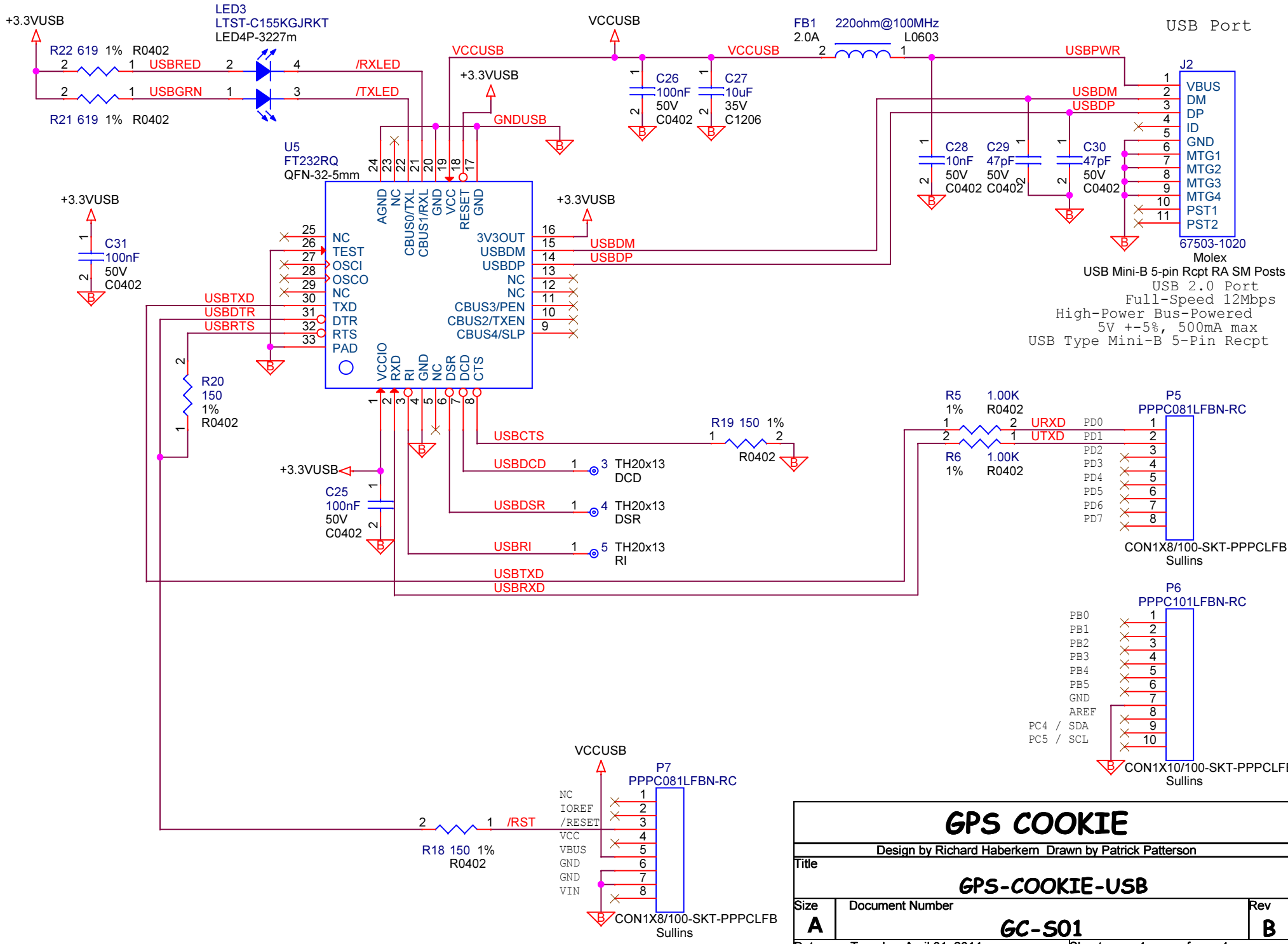


PWR ON



(Use Multiple Solid Vias)

<h1>GPS COOKIE</h1>		
Design by Richard Haberkern Drawn by Patrick Patterson		
<h2>GPS COOKIE - POWER</h2>		
Size <b>A</b>	Document Number <b>GC-S01</b>	Rev <b>B</b>
Date: Tuesday, April 01, 2014	Sheet 3 of 4	



<h1>GPS COOKIE</h1>		
Design by Richard Haberkern Drawn by Patrick Patterson		
Title		
<h2>GPS-COOKIE-USB</h2>		
Size	Document Number	Rev
<b>A</b>	<b>GC-S01</b>	<b>B</b>
Date:	Tuesday, April 01, 2014	Sheet 4 of 4